



Bell Works

Bell Health Entrance Plan *for Patients*



Basic Requirements for Entry into Bell Works Building

1. Bell Health/Immediate Care is located on the west side, ground floor of the Bell Works Building.
2. Facial coverings/masks are required for entry into Bell Works and Bell Health/Immediate Care.
3. Temperature screening will be conducted upon entering Bell Health/Immediate Care by a designated staff member.
4. When entering Bell Works common areas temperature screening will be conducted by a Bell Works security officer. Entry will be denied to those individuals with a temperature above 100.4 degrees fahrenheit
5. When making an appointment at Bell Health, patients will be asked if they are experiencing COVID-19 symptoms. Those patients will be referred to another Immediate Care facility in a different location.

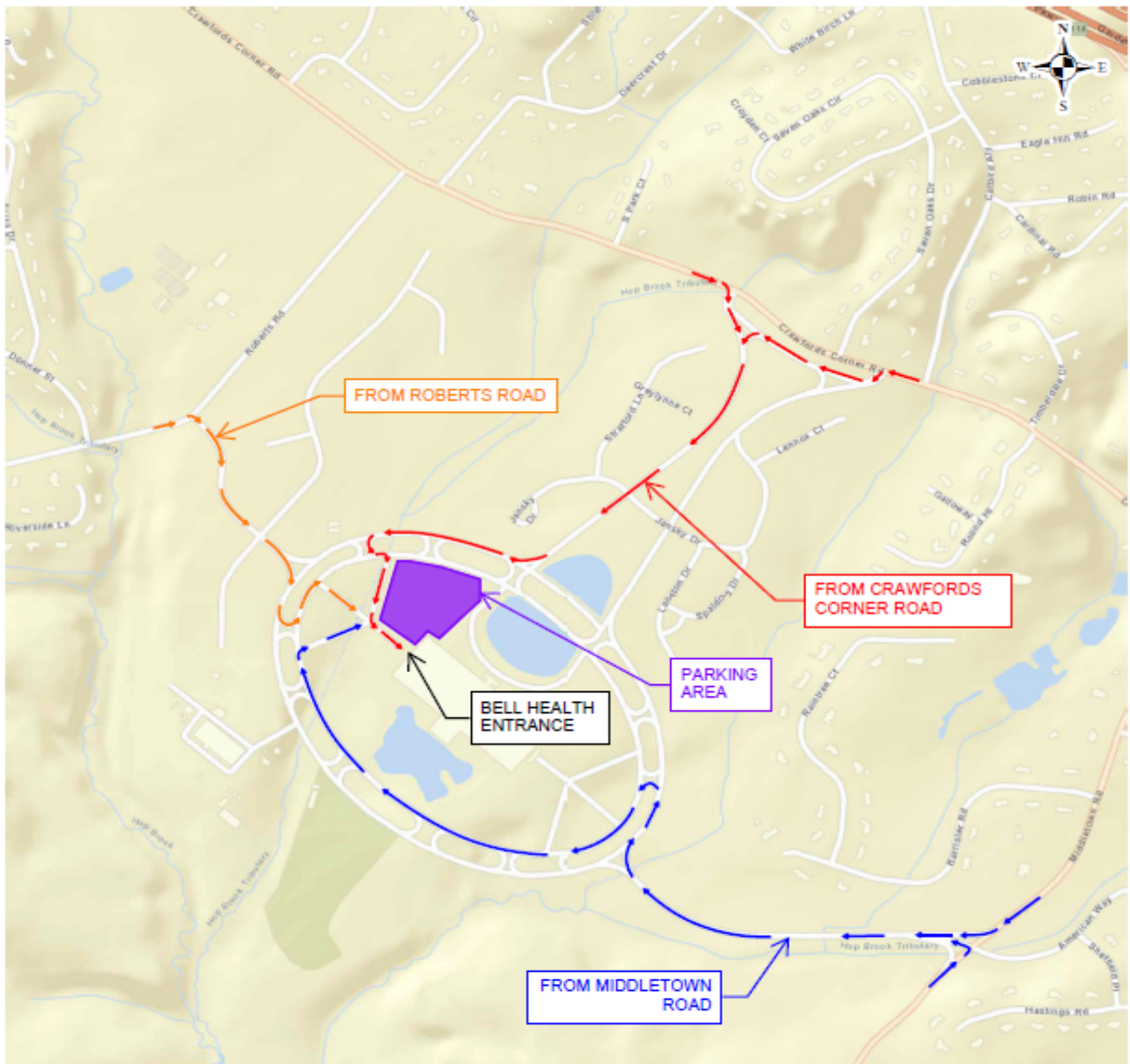
Bell Health Patients Entering Bell Works and Bell Health:

1. The Bell Works Campus has three (3) entrances: Crawfords Corner Road, Middletown Road and Roberts Road. When entering the Bell Works campus, Bell Health/Immediate Care patients will follow the Wayfinding Signs to the JCPL (purple) parking lot which is located near the West entrance of the Bell Works. (see Wayfinding Map)
2. Patients are to park in one of the reserved Bell Health/Immediate Care parking spaces, if available, or in one of the general parking spaces in that same parking lot.
3. Signage will direct patients to enter the Bell Works building using the West Entrance. (see Wayfinding Map)
4. Bell Work's West Entrance has two active entry points. As you face the West Entrance, the entrance/exit on the right is for **Tenants only** and is equipped with a thermal scanner staffed by a Bell Works security officer who will follow established protocol. The entrance/exit on the left is for Bell Health/Immediate Care **Patients only**. Doors will be clearly marked
5. Upon entering the building, all Bell Health patients must:
 - a. Wear a face covering/mask.
 - b. Maintain social distancing.
 - c. Disinfect hands using available hand sanitizer.
 - d. Keep within the delineated area (blocked off near the Bell Health/Immediate Care Entrance to impede access to common areas via this designated entrance) and following directional flow decals for entry into Bell Health/Immediate Care.
6. Upon entering Bell Health/Immediate Care, all patients will be subject to temperature screening (for internal triage purposes) as well as all other indicated Bell Health/Immediate Care procedures.
 - a. A patient having an elevated temperature caused by any illness is required to leave Bell Works promptly after their visit. They will not be allowed to enter Bell Works common areas.

Disclaimer: An entity's use of the Hackensack Meridian Health ("HMH") Endorsement Seal of Approval ("Seal") establishes that the entity has formerly engaged HMH to guide its documentation and processes with respect to the entity's preparations for the return of its work force and customers. The content in any document or any particular process guidelines containing the Seal is based on the acquired knowledge, experience and best practices established by HMH in its involvement with COVID -19, which took into account the then current governmental and regulatory guidelines (as of 12.2020). The Seal establishes HMH's recommendations. The Seal is not an endorsement or guaranty that any particular document or process is superior to other documents or processes and should not be construed by the entity or any third party as such, including but not limited to the entity's workforce, customers or visitors. The Seal should not be relied upon as a basis for making any business, legal or any other decisions by the entity or the entity's workforce, customers or visitors. The entity, as well as the entity's workforce, customers and visitors agree that the entity's use of the Seal does not afford any of them the ability to make a claim of any kind against HMH, or any of its affiliated entities, or their respective directors, officers, trustees, employees, agents or subcontractors for any and all damages that result from the use of the Seal. And the entity, as well as the entity's workforce, customers and visitors, understands that much of the content provided by HMH remains relevant, but that the governmental and regulatory guidelines continue to change and although a Seal is provided, the governmental and regulatory guidelines may require further updating of the documents and/or processes.

- b. Patients that do not have an elevated temperature and would like to enter the Bell Works complex will need to:
 - i. Use the established entry point into Bell Works common area and proceed to Bell Works thermal scanner station. (entry point will be clearly marked and monitored by Bell Works Security)

Wayfinding Map



Disclaimer: An entity's use of the Hackensack Meridian Health ("HMH") Endorsement Seal of Approval ("Seal") establishes that the entity has formerly engaged HMH to guide its documentation and processes with respect to the entity's preparations for the return of its workforce and customers. The content in any document or any particular process guidelines containing the Seal is based on the acquired knowledge, experience and best practices established by HMH in its involvement with COVID -19, which took into account the then current governmental and regulatory guidelines (as of 12.2020). The Seal establishes HMH's recommendations. The Seal is not an endorsement or guaranty that any particular document or process is superior to other documents or processes and should not be construed by the entity or any third party as such, including but not limited to the entity's workforce, customers or visitors. The Seal should not be relied upon as a basis for making any business, legal or any other decisions by the entity or the entity's workforce, customers or visitors. The entity, as well as the entity's workforce, customers and visitors agree that the entity's use of the Seal does not afford any of them the ability to make a claim of any kind against HMH, or any of its affiliated entities, or their respective directors, officers, trustees, employees, agents or subcontractors for any and all damages that result from the use of the Seal. And the entity, as well as the entity's workforce, customers and visitors, understands that much of the content provided by HMH remains relevant, but that the governmental and regulatory guidelines continue to change and although a Seal is provided, the governmental and regulatory guidelines may require further updating of the documents and/or processes.